

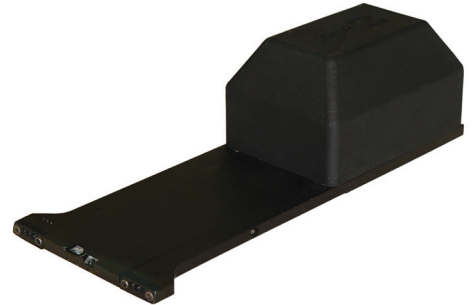
HD Dual View Under-the-Door Camera

ZDV-HD

The Zistos® HD infrared illuminated, Dual View Under-the-Door Camera, is a valuable addition to any tactical system, providing a safe and covert look into rooms that are locked or barricaded. The two sensors allow for looking forward into a room, and looking upward at the back of a door.

FEATURES

- Two miniature CCD sensors, recessed in tongue
- Frame integration electronics provides superior image in total darkness
- Requires only a 1/4in (6.4mm) door-to-floor clearance
- Integrated miniature microphone adds audio
- Direct video cable connection (without pole) for static surveillance situations
- Detachable, dedicated 3-section telescoping carbon fiber pole (HDP-UDC), with universal joint allows safe deployment and horizontal panning of room
- Compatible with only ZistosHD Systems



HD DUAL VIEW UNDER-THE-DOOR CAMERA



HDP-UDC

Specifications

PHYSICAL SPECS

Camera Dimensions	9in (l) x 3.6in (w) x 2.5in (h); 22.9cm (l) x 9.17cm (w) x 6.4cm (h)	Camera Weight	1.2lbs (1.04kg)
Pole Dimensions	2ft 9.2in (.84M) collapsed, 5ft 7.2in (1.7M) extended	Pole Weight	2.29lbs (.54kg)

ENVIRONMENTAL SPECS

Operating Temperature Range	14° to 122°F (-10° to +50°C)	IP Rating/Submersibility	IP64
Storage Temperature Range	-4° to +140°F (-20° to +60°C)		

CAMERA SPECS

Sensor Type	BW CCD	Sensor Size	1/4in
Lux	0.005	Sensor Resolution	400 lines/250k pixels
Pole	7ft 6in pole w/universal joint. Weight: 2.23lbs (1.01kg)	Streaming Resolution	640 x 480
Illumination	6 IR LEDs	LED Wavelength/Power	940nm (invisible)/180 mw/sr
Lens		Field of View - Horizontal	85° forward/54° up

PERFORMANCE SPECS

Effective Distance in Good Ambient Light	1ft to 30ft + (.3M to 9M+)	Runtime*	5hr 20mn w/illumination 6hr 0mn w/o illumination
Effective Distance in Complete Darkness	1ft to 20ft + (.3M to 30M+)		

ORDERING INFORMATION

DESCRIPTION

ZDV-HD - Dual View Under-the-Door Camera with audio	ZDVL-HD - Dual View Under-the-Door Camera without audio
ZDV-CP-HD - Dual View Under-the-Door Camera with audio, with 6ft camera cable (VPC-6-HD) and Under Door Camera Pole (HDP-UDC)	ZDVL-CP-HD - Dual View Under-the-Door Camera without audio, with 6ft camera cable (VPC-6-HD) and Under Door Camera Pole (HDP-UDC)

*SYSTEM RUNTIME SHOWN IS WITH BAT-15XL; BAT-15 IS HALF OF RUNTIME SHOWN.